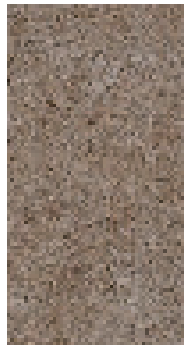




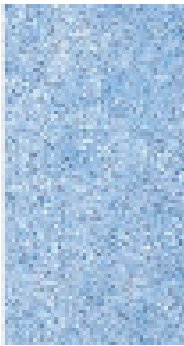
001 \*▲  
Snow White



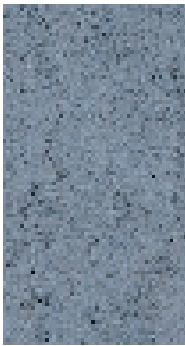
002 ▲  
Porcelain White



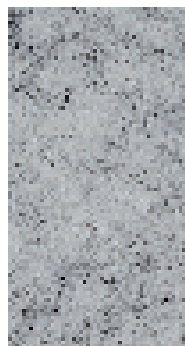
003 ▲  
Sand Brown



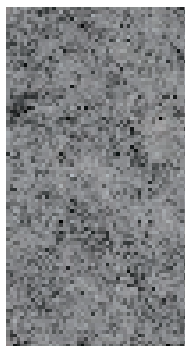
014  
Cloudy Blue



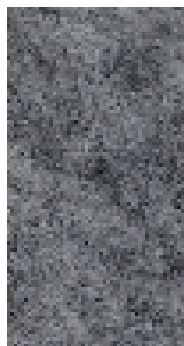
030  
Messy Blue



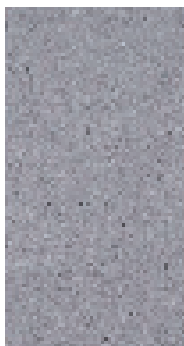
008 \*▲  
Smokey Grey



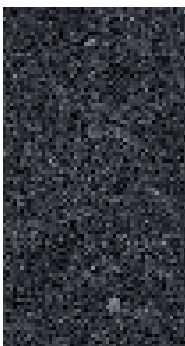
028 \*▲  
Misty Grey



029  
Blurry Grey



007 ▲  
Foggy Grey



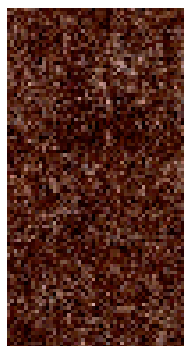
012 \*▲  
Smokey Dark Grey



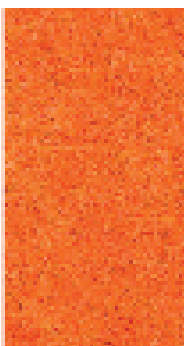
005  
Cappuccino Brown



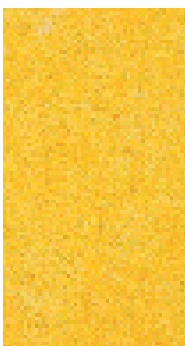
004 ▲  
Latte Brown



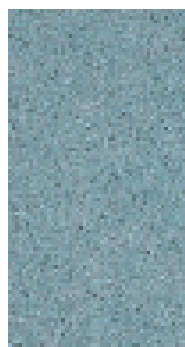
006  
Coffee Brown



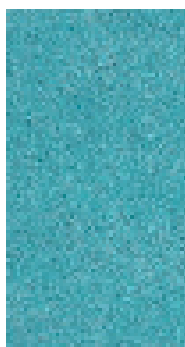
023  
Bright Orange



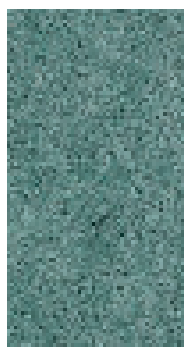
022  
Sunny Yellow



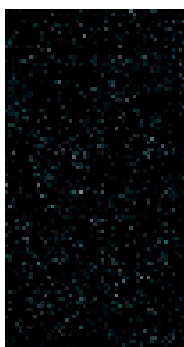
032  
Light Turquoise



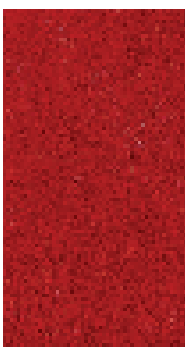
033  
Turquoise



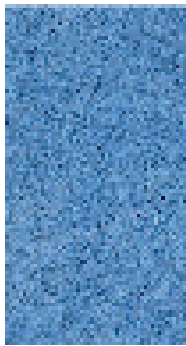
034 ▲  
Ocean Green



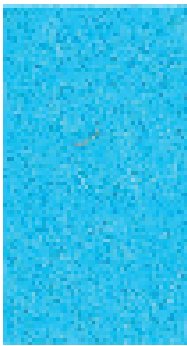
019  
Deep Green



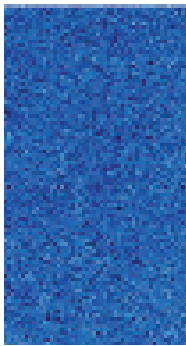
025  
Blood Red



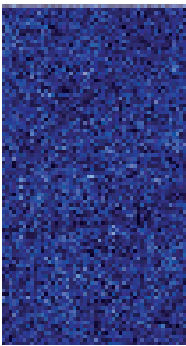
024  
Sea Blue



031  
Ocean Blue



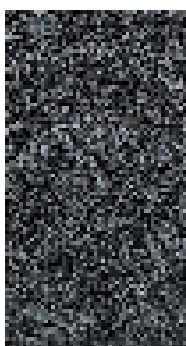
015  
Jeans Blue



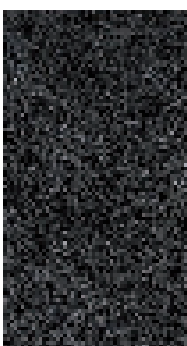
016  
Evening Blue



017  
Dark Blue



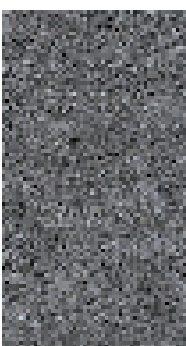
009 \*▲  
Grey



010  
Dark Grey



013 ▲  
Midnight Black



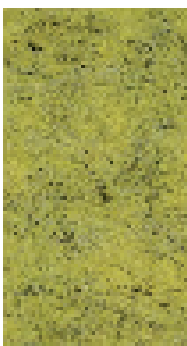
011 \*▲  
Brown Grey



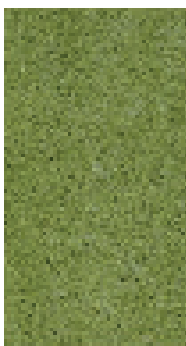
027  
Taupe Brown



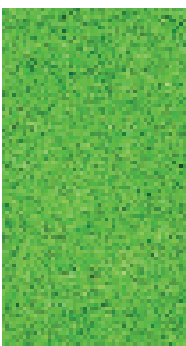
036  
Peach Yellow



035  
Messy Yellow



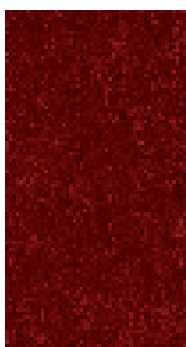
021  
Olive Green



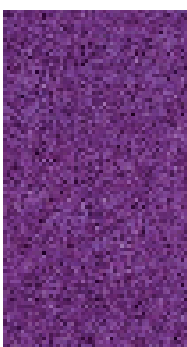
020  
Emerald Green



037  
Flamingo Pink



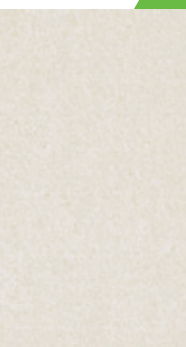
026  
Wine Red



018  
Violet Purple



038  
Pebble Grey



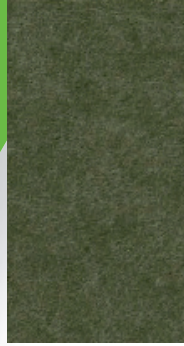
039  
Off-White



040  
Hunter Green



041  
Greige Green



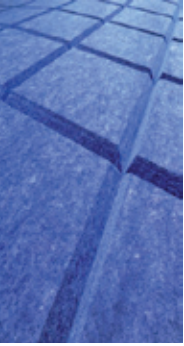
042  
Fern Green



043  
Rust Brown



Double strike



V-cut

**Standard**  
**43 Colours**

**Composition**  
100% recyclable, environmentally friendly

**Recycled content**  
± 70% PET fibers

**Dimensions Raw Flat Panels**  
1220 x 2440 (+/- 3 mm) | *For XL-size see▲*

**Thickness**  
9 mm (+/- 0,5 mm) | *For 24mm see\**

**Density**  
1900 gram/square meter

**Fire Class**  
**B-s2,d0** EN 13501-1

The panels are resistant to rot, fungus and mites.  
Contains no chemical components.

**Low carbon footprint due to Dutch production**



UV printable



Cuttable on Zünd  
and Summa



Glueable with  
Soudal T-Rex Montage kit



Light weight



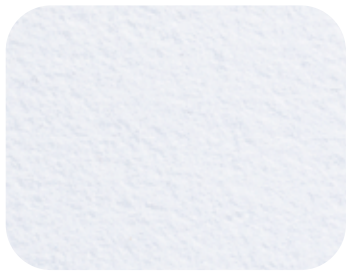
Acoustic



Recycled Pet

\* Also available in 24 mm thickness, density 3500 gram/square meter.  
Other colours on request.

▲ Also available in format 1220 x 2820 mm.



999 White



957 Ivory White



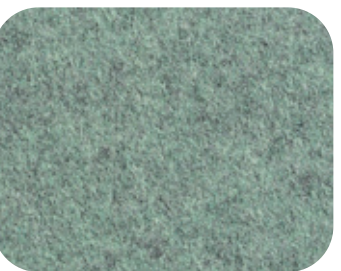
961 Beige Sand



960 Camel



922 Eucalyptus



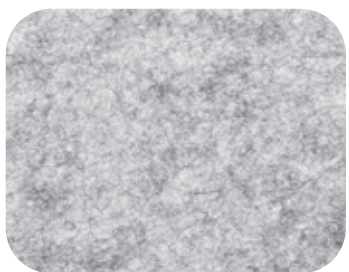
924 Green



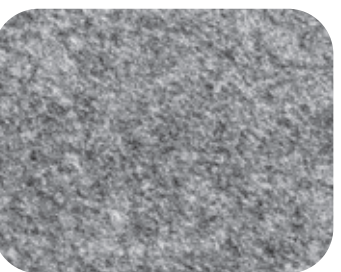
926 Dark Turquoise



942 Red Coral



978 Silver Grey



970 Grey



950 Anthracite



987 Black



932 Light Blue



936 Denim

All colours in the Premium line are also available in 12 mm on project basis only  
AcoFelt is made of recycled material, this may cause colour variations.

**MADE IN THE NETHERLANDS**

AcoFelt is made of recycled material, this may cause colour variations.

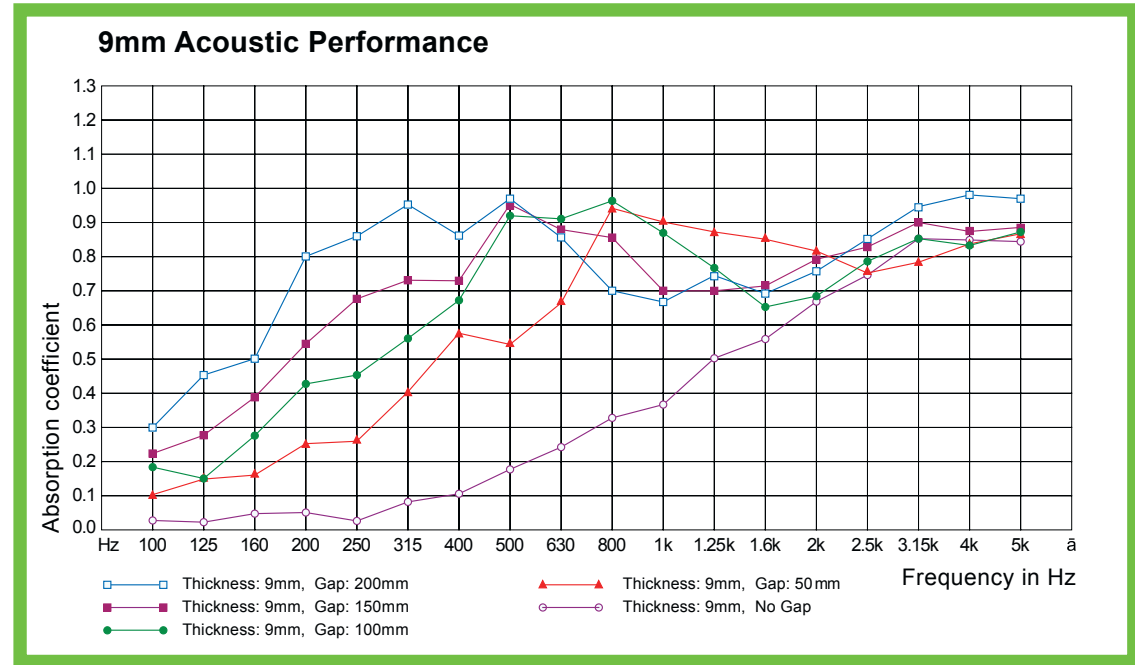
AcoFelt is made of recycled material, this may cause colour variations.





## Acoustic

**Acoustics:** AcoFelt PET felt contributes to good acoustics in any room. The acoustic panels have a sound dampening effect when you attach them to a wall or a ceiling. In addition, it is quick and easy to install. PET felt absorbs sound and, unlike hard materials, prevents sound from bouncing around the room.



## Recycled Pet

**Recycled content:** AcoFelt panels consist of  $\pm$  70% recycled PET fibers. AcoFelt panels are 100% recyclable and contains no chemical components.

Our premium collection has a low carbon footprint due to the factory being based in the Netherlands.



AcoFelt is made of recycled material, this may cause colour variations.

AcoFELT  
Recycled Acoustic Pet Felt



AcoFELT  
Recycled Acoustic Pet Felt



AcoFELT  
Recycled Acoustic Pet Felt

## 57 COLOURS

•14 PREMIUM COLOURS

•43 UNI-COLOURS

## RECYCLED PET-FELT



## ADJUSTMENTS



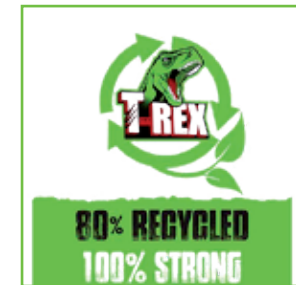
### UV printable

**Printing:** By digitally printing our AcoFelt with our UV printer, we add image and colour. This makes it possible to add an additional design element.



### Glueable with SOUDAL T-Rex Montage kit

**Mounting:** This kit is specifically for mounting our AcoFelt panels. This high quality beige coloured kit offers good adhesion and durability for lightweight materials.



### One side adhesive

**Mounting:** If desired, we have the capability to make one side adhesive, allowing it to securely attach to various surfaces.



### Lightweight

**Density:** With a density of 1900 gr/m<sup>2</sup> (Standard) and 2000 gr/m<sup>2</sup> (Premium), AcoFelt is very light. Which makes it easy to assemble.



### Cuttable with Zünd and Summa

**Digital cutting:** With our Zünd digital CNC cutting machine, we can cut almost any pattern, design or logo. So we can cut through and through, beveled and rounded corners. And we can cut patterns using a V-Cut.